



Blood & Marrow Transplant Data Management Software Record Data From Referral Through Follow-Up



Version 3.2 | Release Notes

StemSoft is pleased to announce our newest release of BMTserve™.

BMTserve™ version 3.2 build 2007011817 includes the following new features and changes to version 3.1.6:

➔ Auditing of BMTserve™ Patient Data Fields

All Insert/Update/Delete actions will be recorded in the Audit tables for fields on the following BMTserve Screens:

- Demographics
- Comments
- Insurance
- Physician Maintenance
- Physician Relationships (currently selected Patient)
- Nurse Maintenance
- Nurse Relationships (currently selected Patient)
- Next of Kin
- Ward/Room Maintenance
- A/D/T
- Clinic Visit
- Follow Up
- Diagnosis
- Therapy
- BMT
- Procedure
- Complication
- Complication - GVHD Data (Acute/Chronic)
- Engraftment
- Relapse
- Donor
- Harvest
- Labs
- Labs – UDF

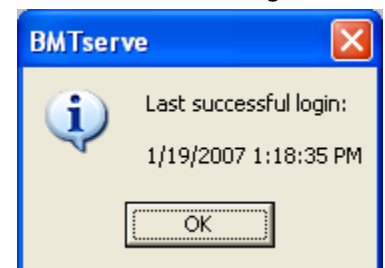
➔ Auditing of BMTserve™ Security Settings

The following Security related functions are now recorded in the Audit tables:

- Adding/Removing Application Security UserIDs
- Changing of UserID passwords
- Changes to Security Access Rights

➔ Enhanced HIPAA Compliance

- BMTserve Administrator's can now enforce Strong Passwords and suspend accounts without deleting them. Strong Passwords are enabled by default and the settings can be edited from the application menu.
- BMTserve automatically reports the last successful login by a user, aiding in the identification of fraudulent access.
- The **BMTserve Password Encryption** feature is now available. This means that login ID's administered through BMTserve will no longer be able to log into the database using 3rd party tools (SQL+, Crystal Reports, etc.). This feature will be enabled by default for new sites and can be disabled by a StemSoft Consultant.



Add Search Option for IUBMID to Person Selection Area

- IUBMID column has been added to the Person Selection List. Allows users the ability to find a patient based on IUBMID by sorting the list (click the column header).

Comment Window

- A new field has been added for the UserID of the person creating the comment
- The comment screen, displays the UserID of the last user to create/edit on the comment screen.

Date fields changed to Date/Time fields

- Time Component can now be entered and displayed in the following fields:
 - Lab Test Dates, BMT Labs Dates, UDF Dates, BMT and Harvest Details Screens Collection Date, Process Date, and Infusion Date columns.
 - Enter as dd/mm/yyyy hh:mm
- The corresponding field labels have been renamed from Date to Date/Time to reflect this change.
- Standard BMTserve Crystal Reports updated to reflect this change. The following Crystal Reports had some date field labels renamed to “Date/Time”:
 - Face Sheet
 - BMT Product Summary
 - Harvest Product Summary
 - Discharge Summary

Relapse - Fields Added

- “Current Relapse Number”, which identifies the sequential number of occurrence of the relapse.
- “Chemo Sensitivity”, which identifies the risk or sensitivity to chemo-therapy.

Follow Up – Fields Added

- “Relapse Number” from a Relapse record has been added and will be displayed as read-only.
- Every Diagnosis record will automatically add a row to Follow-up screen and its Disease Status will also be displayed.
- The Disease Status field, that references the same valid values list as on the Diagnosis screen, has been added and can be answered for every manually entered Follow Up record.

Quick Sorting Ability

Modified to support sorting in Ascending or Descending order by clicking (left-button mouse click) a column header.

- All Grids Views
- All List Views
- Labs

➔ **Diagnosis – Dynamic Disease Status List Based upon Primary Disease**

- You can now define which of the Disease Status valid values should be displayed as options based on the primary disease. This functionality is carried over to the BMT and Therapy screens where Disease Status can also be entered.
- Diagnosis Details Screen, BMT Details screen, Therapy Details Screen and the Follow-Up Details screens, will only display Disease Statuses configured for the Primary Diagnosis of the patient's selected Disease.
- Predefined Disease Statuses are automatically created and assigned based on Primary Disease codes in newly created CORE v7.2.2 Databases.
- Existing customer Databases upgraded to CORE 7.2.2 will not be automatically updated. The configuration of Primary Diagnosis Disease Status lists will need to be updated manually.
- References the Primary Disease column in the Diagnosis Codes validation list.

➔ **Lab Test Range**

Warning of result exceeding beyond the defined range should only happen when the result is below the low value or the result is above the high value, but not when it is equal to it.

➔ **Redundant Data Entry (Double Entry Verification) Available**

A validation list "Redundant Data Entry" has been added with setup options for the below fields:

- **SSN/SIN** – in Demographics screen
- **Lab Test Result** – in Diagnosis and Labs/UDF. The data field will support redundant data entry if the value is numeric or if the value is not defined in the corresponding result list for the lab test types where a result list is defined.
- **Ordered & Actual Dosage** – for therapy (including therapy implemented in Complication) screen.
- **BSA** – for therapy (including therapy implemented in Complication) and BMT screens. The field will support redundant data entry only if manually entered.
- **Doses** – for therapy (including therapy implemented in Complication). The field will support redundant data entry only if manually entered.
- **Wt** – in BMT screen.
- **Ht** – in BMT screen.
- **Volume at Infusion** – in BMT Vol(ml) field, only if it is entered in BMTserve.
- **Volume at Collection & Product Fraction** – in Harvest Vol(ml) field, only if it is entered in BMTserve.
- **Cells per ml** – for Harvest at Collection & Product Fraction, and BMT at Infusion.

➔ **Clinic Visit -OPCV Code Validation List Changed**

Clinic Visit – 'Out-Patient Clinic Visit (OPCV) Code length has been increased from 3 characters to 40 characters to support HL7 Interface Clinic Visit Codes.

➔ **Diagnosis Description Tool Tip**

Due to limited size of Diagnosis Code, the Diagnosis Description will be shown as a Tool tip to provide full diagnosis description

➔ Performance Improvements made for Accessing ADT and Therapy Records

➔ Crystal Reports XI

- BMTserve 3.2 has been updated to use the Crystal Reports XI Print Engine which makes it possible to now run a report from the BMTserve menu that uses the new Crystal Reports XI features. It is backward compatible to Crystal Reports version 8.5.
- Included as part of the updated Crystal XI Print engine, the Print Dialog box will now allow Printer Selection, Page(s) Selection, and Number of Copies to be printed.
- If there is no printer configured on the PC when the 'Print' option is selected from the Preview window, a message box is now displayed indicating "No printer has been configured".

➔ Updated / New Standard Crystal Reports

- **Inpatient Rounds – Complete.rpt** updated: report rebuilt using Crystal Reports XI due to file corruption. No design changes made.
- **BMTserve Audit Trail.rpt** added: this is a new audit trail report that will only print the audit trail history of actions made in BMTserve.
- **StemLab Audit Trail.rpt** added: this is a new audit trail report that will only print the audit trail history of actions made in StemLab.
- **Audit Trail.rpt** updated: this report was updated to show the 'Reason for change' information that can now be entered in StemLab. This report continues to show all audit trail history of actions done in both BMTserve and StemLab.

Notes

- Compatible with MS SQL Server 2000, Oracle 9i and Oracle 10g
- Build Number is 2007011817
- StemSoft CORE Database Version is 7.2.2
- Compatible with:
 - StemLab™ 3.2
 - StemSoft ReportManager™ 3.2
 - BMTbase™ 3.2.4

BMTserve™ 3.2 build 2007011817 includes the following updated files:

• BMTsrv32.exe	6.5.1.620	01/18/2007 17:32
• ssBTransfer.dll	3.1.0.9	6/15/06 12:45 PM
• Slvvhdlr.dll	3.2.0.16	1/12/07 2:50 PM
• SSComponents.ocx	1.0.0.156	1/15/07 3:04 PM
• SSComponentsSupport.dll	1.0.0.104	6/27/06 10:56 PM
• SSControls.ocx	1.1.0.10	8/30/06 11:06 AM
• SSLabObj.dll	3.2.0.26	11/9/06 10:19 AM
• SSListview.ocx	1.0.0.53	12/20/06 3:25 PM
• SSListViewSql.dll	3.1.0.21	7/18/06 9:04 PM
• SSListviewSupport.dll	1.0.0.27	12/20/06 3:18 PM
• SSProcess.dll	3.2.0.15	11/8/06 4:25 PM
• sssqlmgr.dll	1.0.0.67	6/27/06 10:37 PM
• SSUtilities.dll	3.2.0.4	9/21/06 10:20 AM
• SSVVList.ocx	3.2.0.6	1/12/07 2:51 PM
• ssBDate.dll	1.0.0.8	1/17/07 10:44 AM
• ssCORESec.dll	3.2.0.41	1/15/07 11:18 AM
• SSCRUtil.dll	1.11.0.3	8/30/06 3:33 PM
• SSDBConn.dll	3.0.0.16	6/6/06 9:11 AM
• SSDBUtil.dll	3.1.0.21	6/8/06 10:40 AM
• SSPeopleBox.ocx	3.1.0.3	1/12/07 2:51 PM
• ssPSpread.dll	1.0.0.21	11/2/06 1:24 PM

If you have any difficulties or questions, please do not hesitate to
Contact the StemSoft Support Team at
1-800-671-3234 or email support@stemsoft.com